

Bungay Marathon Car Parking and Directions - 2022

Road closure (marshalled and open to runners cars at certain times)



To Car Parking



Walk to Start



There is **no parking** at the Race HQ, **NR35 2RT - froth.choice.functions**

No parking in the village of Ditchingham

Free parking, by kind permission of the owners, is at three locations in Bungay (car parks 1, 2 & 3).

Car park 1, Outney Common, will close (and be locked) at 16.00.

Additional council parking (4, 5 & 6) may be chargeable (up to 4 hours £2).

Please allow at least 20 minutes to walk to the Race HQ.

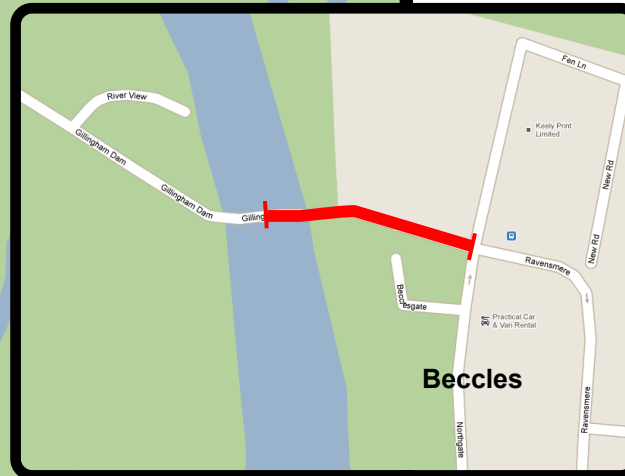
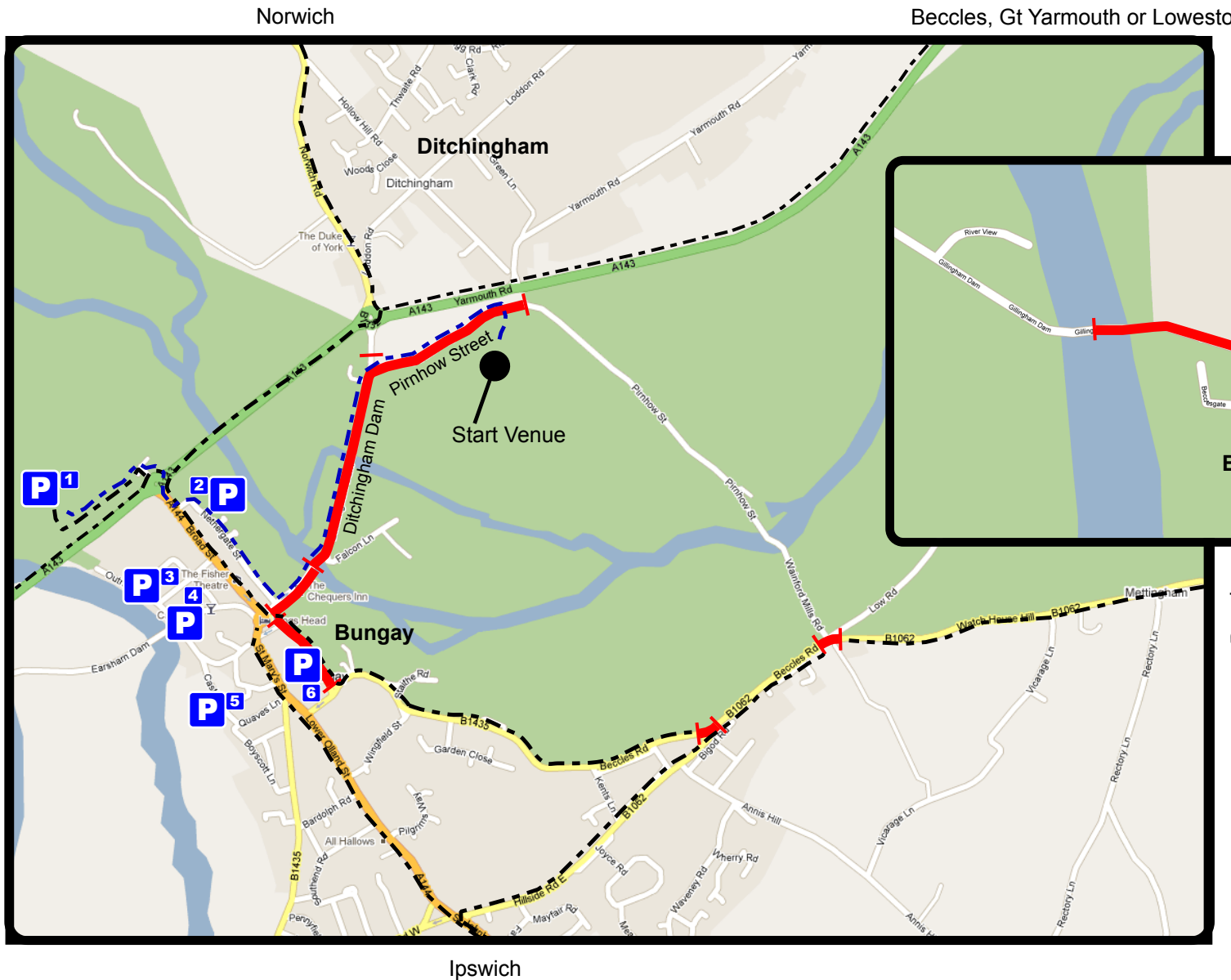
The Car Parks will be unattended during the day.

Cars parked at entirely owners risk.

Updated information 4/04/2022

BACT will be providing a shuttle bus service which will pick up from:

1. Chaucer Club in Scales Street (for runners parking on Clays car park)
2. On Broad Street approximately next to Nethergate St (for runners parking at Waveney Trucks)
3. By entrance to Outney Caravan Park (for runners parking on the common)



At the Race HQ the stop will be at the junction of Pirnow St and Ditchingham Dam.

The busses will be in BACT livery and will have a corex sign 'Race Courtesy Bus'

The service will run 8 AM - 3 PM.

Please allow enough time for the short walk as we cannot guarantee transport for everyone.

- Beccles**
- 1 Outney Common, NR35 1HG
briskly.stun.hopping
 - 2 Waveney Trucks, NR35 1HE
shatters.destiny.walkway
 - 3 Clays, NR35 1AA
gazed.tickles.advantage
 - 4 ESC Scales Street, NR35 1AA
statement.adopts.grudges
 - 5 ESC Priors Lane, NR35 1DB
sharpens.recoup.lame streetcar.devoured.fidget
 - 6 ESC Wharton Street, NR35 1EL
divided.mingles.agreeing

ESC = East Suffolk Council